



THE MINISTRY OF
NATIONAL EDUCATION

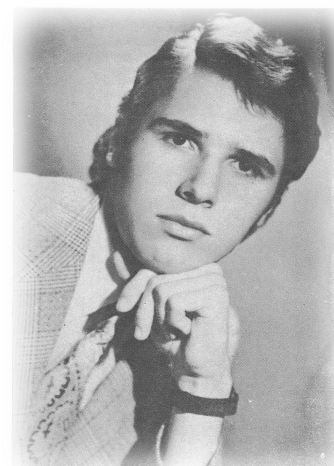


HARISME CULTURAL
ASSOCIATION



NATIONAL COLLEGE OF ARTS
"DINU LIPATTI" - BUCURESTI

“Tudor Dumitrescu” International Performers Competition 11th edition Bucharest June 9th – 10th 2018



“Tudor Dumitrescu” International Music Competition had its first edition in Bucharest, in December 1988, in order to bring a tribute to the pianist and composer, Tudor Dumitrescu.

Born in 1957, in a family of musicians, Tudor Dumitrescu started studying the piano under his father’s guidance, the composer Gheorghe Dumitrescu. He was a student of “Music High School No.1” in Bucharest (now National College of Arts “Dinu Lipatti”) where he studied with Prof. Viorica Platon. He went to Weimar where he improved his performance with Dieter Zeichlin and Frantisek Rauch and specialized in Geneva with Nikita Magaloff.

He continued his studies at “Ciprian Porumbescu” Music Conservatory, in Bucharest, and worked with Lidia Cristian, Gheorghe Halmos, Cella Delavrancea and Dan Grigore.

Tudor Dumitrescu gave concerts with national and foreign philharmonics, also numerous recitals, appeared in radio and TV shows. He participated in contests where he stood out as a “pianist with a precise technique and artistic discipline”: he won the Gold Medal at Youth and Students’ Festival (Berlin – 1973), 1st Prize at the Republican Contest (Bucharest), the Young Interpret Prize – awarded by the critic section of A.T.M. (1974).

As a multilateral musician, Tudor Dumitrescu composed piano works, lieds, a deep work for cello, “works that stand out through a large breath, chromatic combinations, rhythmical and timbre variations “– as the musical critic, Doru Popovici wrote. “He worked hard and with passion, giving himself to music, turning rest hours into continuous work times, in order to give his whole being to understanding music...” (George Sbarcea, March 1977).

By this content, Cultural Association “Harisme” and National College of Arts “Dinu Lipatti” wants to contribute to a better knowledge of Tudor Dumitrescu’s personality and work and also to promote the most valuable young talents from the country and abroad.

11th edition of the Tudor Dumitrescu International Music Competition includes three new sections, besides the piano: cello, flute and trumpet.

Young musicians that fit in the next age categories, may participate in this contest, irrespective of their nationality.

CONDITIONS OF PARTICIPATION

PIANO

Category A – born in the year 2008 (and after)

Category B – born after Jan. 1st 2006

Category C – born after Jan. 1st 2004

Category D – born after Jan. 1st 2002

Category E – born after Jan. 1st 1999

II. Contest's Repertoire

Category A (max. 10 min.)

- a) J.S. Bach – a work by choice
- b) A work, or more, by contestant's choice

Category B (max. 15 min.)

- a) J.S. Bach – a work by choice
- b) A classic sonata (1st part only) or variations on a theme
- c) A work by choice from the romantic, modern or Romanian repertoire

Category C (max. 20 min.)

- a) J.S. Bach – a work by choice
- b) A classic sonata (1st part only), or variations on a theme (J. Haydn, W.A. Mozart, L. van Beethoven)
- c) A work by choice from the romantic, modern or Romanian repertoire

Category D (max. 25 min.)

- a) J.S. Bach – Prelude and Fugue (Well Tempered Clavichord)
- b) A classic sonata (1st part only) or variations on a theme (J. Haydn, W.A. Mozart, L. van Beethoven)
- c) An important work from the romantic, or modern music, or one or more Tudor Dumitrescu's Preludes

Category E (max. 25 min.)

- a) J.S. Bach – a Prelude and Fugue (Well Tempered Clavichord)
- c) A classic sonata (1st part only) or variations on a theme (J. Haydn, W.A. Mozart, L. van Beethoven)
- d) An important work from the romantic, or modern music, or one or more Tudor Dumitrescu's Preludes

(The scores for Tudor Dumitrescu's Preludes are offered at the request of the contestant by the contest's Secretary.)

CELLO

Category A – born in the year 2008 (and after)

Category B – born after Jan. 1st 2006

Category C – born after Jan. 1st 2004

Category D – born after Jan. 1st 2002

Category E – born after Jan. 1st 1999

Category A (max. 10 min.)

- a) a slow piece, by contestant's choice
- b) a fast piece, by contestant's choice

Category B (max. 15 min.)

- a) an etude by contestant's choice
- b) a baroque piece or baroque sonata- two parts (slow and fast)
- c) A work by choice from the romantic, modern or Romanian repertoire

Category C (max. 20 min.)

- a) an etude by contestant's choice
- b) a baroque sonata – two parts (slow and fast) by contestant's choice
- c) a virtuosity work or a concert – 1st part or III part, by contestant's choice

Category D (max. 25 min.)

- a) an etude or a capricce work by contestant's choice (A. Franchomme, J. L. Duport, D. Popper)
- b) J. S. Bach – a Solo Suite for cello nr.1 and nr.2, by contestant's choice - Allemande, Courante, Sarabande and Gigue, Menuet I/II
- c) a virtuosity work
- d) a concert – 1st part or III part, by contestant's choice

Category E (max. 35 min.)

- a) an etude or a capricce work by contestant's choice (D. Popper, C. A. Piatti)
- b) a sonata - two parts (slow and fast) by contestant's choice (A. Franchomme, L. Boccherini, G. Valentini or J. S. Bach - a Solo Suite for cello nr.1, nr.2, nr.3 by contestant's choice - Allemande, Courante, Sarabande and Gigue, Menuet I/II, Bouree I/II
- c) a work by choice from the romantic, modern repertoire, solo or piano accompaniment
- d) a classic, romantic or modern concert – a fast part with cadenza or a slow part and fast part

Note

- A contestants can opt for a superior category.
- The organizers do not ensure the presence of an accompanist.
- All the pieces will be performed without musical scores

FLUTE

Category A – born after Jan. 1st 2005

Category B – born after Jan. 1st 2003

Category C – born after Jan. 1st 2001

Category D – born after Jan. 1st 1999

Category A (max. 20 min.)

- a) an etude by contestant's choice
- b) a preclassical sonata – two contrasting parts or preclassical concert – first part by contestant's choice
- c) a small classic piece (classic, romantic or Romanian repertoire) by contestant's choice

Category B (max. 25 min.)

- a) a preclassical sonata – two contrasting parts
- b) a concert – 1st part or II and III part, by contestant's choice
- c) a Romanian piece or a virtuosity work by contestant's choice

Category C (max. 30 min.)

- a) a preclassical, classic, romantic, Romanian sonata - two contrasting parts or a Fantesie by G. Ph. Telemann(solo) by contestant's choice
- b) first part, by contestant's choice, of the concert by: J. Haydn, J. J. Quantz, C. Stamitz, M. Blavet, M. Gretry, L. Boccherini, J. Leclair
- c) a virtuosity work (max.10 min)

Category D (max. 35 min.)

- a) J. S. Bach – a sonata, two contrasting parts
- b) W. A. Mozart - a concert – first part or II and III parts, by contestant's choice: K.313/285c in G dur or K. 314/285d in D dur
- c) G. Enescu – Cantabile and Presto for flute and piano

Note

- *A contestants can opt for a superior category.*
- *The organizers do not ensure the presence of an accompanist.*
- *All the pieces will be performed without musical scores.*

TRUMPET

Category A – born after Jan. 1st 2006

Category B – born after Jan. 1st 2004

Category C – born after Jan. 1st 2002

Category D – born after Jan. 1st 1999

Category A (max. 10 min.)

- a) two contrasting works (different style, form, character) by contestant's choice

Category B (max. 15 min.)

- a) two contrasting works (different style, form, character) by contestant's choice

Category C (max. 20 min.)

- a) a concert – 1st part or II and III part, or integral, by contestant's choice
- b) a work by contestant's choice

Category D (max. 30 min.)

- a) a concert – 1st part or II and III part, or integral, by contestant's choice
- b) a work by contestant's choice

Note

- *A contestants can opt for a superior category.*
- *The organizers do not ensure the presence of an accompanist.*
- *All the pieces will be performed without musical scores.*

III. Participations terms

The **dead line** for application is June 3th 2018

Participation tax will be for all the contestants 30€.

The fee will be sent to the bank account:

BANCA TRANSILVANIA SA

Agentia Bucuresti - Decebal (Romania)

EURO: IBAN : RO61BTRLCRTEUR0V00042201 (for the abroad contestants)

SWIFT : BTRLRO22

Cultural Association "HARISME", C.I.F. 18494829

If a contestant does not participate anymore, the fee is not refundable.

For **applying**, the following documents are necessary:

- a) birth certificate
- b) copy of the receipt that proves the payment of the applicant fee
- c) application form on www.cnadl.ro

The documents will be sent to the email address: inscrieri_tudordumitrescu@yahoo.com "Tudor Dumitrescu" Contest's Secretary, Prof. Venera Babes,

Artistic director of the contest, or e-mail: venera_babes@yahoo.com

For more information call: (004)0740.698.087.

The application documents that are sent with no copy of the receipt that proves the payment of the application fee will not be accepted. The confirmation of the application and the contestant's programming will be announced through e-mail between 5th -8th June 2018.

IV. Prizes

For each category 1st Prize, 2nd Prize and 3rd prize will be awarded. The prizes consist of sums of money, medals and diplomas, as well as special prizes. The prizes will be awarded in a gala concert of the winners.

V. The jury:

The jury's members are musicians and pianistic personalities with artistic and pedagogy experience.

- The contest will take place at "Dinu Lipatti" National Arts College – Bucharest.
- The contestants are asked to present themselves at the contest's Secretary in order to confirm their arrival and to present the identity documents.
- The contestants will perform in alphabetical order.
- The organizers reserved the rights to publish, for the purpose of promotion, video and audio recordings during the competition, the registration representing the consent of the participants.
- The organizers will provide practice rooms for the contestants at "Dinu Lipatti" National Arts College - Bucharest.
- All the auditions will take place in front of the public. The Artistic Director reserves the right to change some of the rules, if necessary, informing the contestants. From the moment of signing up, all the contestants agree with this set of rules.
- For more information, call: (004)0740698087, between 9a.m. – 7p.m. (Romanian time) or write a message at www.facebook.com/concurspiantudordumitrescu

FIȘĂ DE ÎNSCRIERE/ APPLICATION FORM

Concursul Internațional de pian “Tudor Dumitrescu”
“Tudor Dumitrescu” International Performers Competition

Ediția a XI -a

București, 9th – 10th June 2018

NUME/ SURNAME..... PRENUME/FIRST NAME.....

DATA/ LOCUL NAȘTERII/ DATE/ PLACE OF BIRTH.....

ADRESA/ADDRESS.....

ȚARA/COUNTRY.....

TEL..... E- MAIL.....

PROFESOR/ TEACHER/ NUME/ SURNAME

ADRESA/ ADDRESS.....

TEL..... E- MAIL.....

CATEGORIA/ CATEGORY A..... B..... C..... D..... E.....

CONTESTANT’S REPERTOIRE

(Compozitor, Titlu și Timp/ Composers, Titles and Time)

.....
.....
.....
.....
.....
.....

Anexez / I Enclose:

a) C.V.

b) certificat de naștere/ Birth certificate

c) chitanța de achitare a taxei/ copy of the receipt of the Application fee

LEI (la cursul de schimb al zilei): IBAN: RO76BTLRONCRT0V00042201

EURO: IBAN : RO61BTRLCRTEUR0V00042201 (for the abroad contestants)

BANCA TRANSILVANIA – Bucharest, Romania

Cultural Association “HARISME”, C.I.F. 18494829

Data

Semnătura/Signature

Semnătura parinților/ Parents signature for minors